



WADDINGTON STREET CENTRE



Annual Report 2022/2023

Charity Registration – 701514
Company Registration - 2330506

A bit about us.....

Waddington Street Centre is a small, independent mental health resource centre with over forty years of experience, offering a wide range of services to the local community.

Our activities and services aim to support individual personal development and reduce social isolation and exclusion. Everything we offer is designed to suit a range of interests and needs. We are passionate about mental health and helping people to get back on track.

We believe that people who struggle with their mental health should have a safe, supportive and interesting place to recover. Waddington Street is a community of like-minded people who support one another to have the best possible lives.

At Waddington Street Centre, we're about people!



WSC Artist – John Bailey

Reflections on the Last Year.

Another busy year for WSC, this time with an Alliance focus. In April 2022 the Durham Mental Wellbeing Alliance went live. Thirteen providers (now fifteen) coming together to provide a range of support services with an emphasis on prevention. This has been a new way of working for us, however, it has been a great opportunity to streamline our services and think long and hard about our core business and what is important to us. As a result, our Board of Trustees decided that we should move away from the delivery of supported accommodation because our Alliance colleagues - Home Group and Richmond Fellowship, do this on a larger scale. We supported our tenants to source new accommodation. All of our tenancies ended by December 2022. Thanks must go to our landlords: The Hospital of God at Greatham, St Margaret's PCC and Davison Holdings for their input over this hectic and transitional period. This change has allowed us to concentrate our attentions on the development of a service which focuses on promoting good physical health. This is an increasingly important area and it is our great pleasure to support our members to become fitter and make better choices. Our Waddy Feel Good Service offers one to one support and group activities including; Badminton, Football, Gym, Walking and New Age Curling. We are grateful to our community partners, including Durham University for inviting us to use their facilities and receive support from their student volunteers.

To celebrate the arrival of the Durham Mental Wellbeing Alliance we had a launch event at the Raddison Hotel in June 2022. The event was a great success and brought us some positive attention. As the Alliance lead for Co-production and User Engagement, we were delighted to co-write and deliver a presentation about user voice with people who have lived experience.

It felt particularly important to those using our services to have the spotlight.

As an organisation and community, we have had to navigate many changes in the last year. In addition to the ongoing challenges of Covid and the more recent 'Cost of Living Crisis,' it has meant that we have needed to work even more closely as a team. Camaraderie and team spirit have never been more important. Our tiny team became smaller as we said farewell to our Digital Champion – who'd been with us for three years. Their contribution has supported members to become digitally included and have safer access to the internet.

We also said goodbye to our Young Adult Support Café (YASC). After seven years we felt that the needs of the group had changed and with funding challenges it seemed appropriate at this juncture to call it a day. This work was made possible by our strong partnership with 'Investing in Children.'

As a delivery partner of Stamp it Out – Mental Health Anti Stigma and Discrimination Campaign Group, we were part of a joint research project with Northumbria University. We explored the service user experience of stigma and discrimination (including self-stigma). The results, which are as yet unpublished, seek to bring about greater understanding and hopefully change. Stamp it Out became a sub-contractor of the Durham Mental Wellbeing Alliance in October 2023. We look forward to working with them even more closely. We want to ensure that across everything we do, people are treated with the dignity and respect they deserve.



Pictures from the DMWA Launch Event.

We've also focused our time on the planning and creation of our new Business Development Plan. Our priority areas in the plan are: Finance, Relationships, Staff and Members, Co-Production and Looking After our Premises. As we head into an uncertain future we want to make sure that our foundations are sound and stable.

Most importantly though, our last year has been about supporting our members through these increasingly difficult times. We are constantly aware of the demands and challenges our members face. Issues of poverty are very real and many of our members have limited funds. All the more reason for WSC to provide good quality activities and services which are free and inclusive. Thanks to the kindness and generosity of financial donors we were able to offer the Centre as a warm space from November 2022 to March 2023. Simple gestures like providing free hot drinks and soups were welcomed and appreciated by our members.

As much as we benefit from the kindness of others we also like to give back to our community. In May 2022 we purchased an Acer King Crimson tree for Wharton Park. We like to visit often, with staff and Waddy Members, and its central location will mean it is enjoyed by all for many years to come.

Ali Lee, Centre Manager



Our Formal Charity Objectives, Values and Activities

Our objectives, as set out in the company's Memorandum of Association, are;

- i. Establishing and promoting any charitable purpose in order to support people with mental health needs***
- ii. This will be undertaken primarily through the provision and management of a resource centre and support for independent living***
- iii. The charity's beneficiaries are principally people living in County Durham***

Our values embrace:

- A person-centred approach. Everyone is important to us: those who work for us and those we support.
- We are happy to learn from others and particularly from listening closely to our members.
- Respecting individuality and diversity. We value difference and want everyone to be treated with personal dignity and respect, free from discrimination or harassment. We believe everyone has a positive contribution to make.
- Quality driven, open, honest, transparent and accountable. We aim for high standards in all we do. We aim to be efficient and effective.
- Positive about partnerships. We invest in genuine partnership working, striving to create new alliances and new opportunities to help us achieve our aims.

All our charitable activities focus on providing effective support and meaningful opportunities to adults living in the community who have mental health needs and are undertaken to further our charitable purposes for the public benefit.

Demand is great because evidence tells us that:

“Individuals with SMI have a reduced life expectancy of 10-15 years compared with the general population (de Hert et al 2011)

Individuals who are socially isolated are between two and five times more likely than those with social ties to die prematurely” (Marmot review 2012)

More locally, Co Durham has a population of circa 520k

“51,000+ have a common mental health disorder, e.g. Anxiety and Depression”

“23,000+ have SMI (Serious Mental Illness, e.g. Schizophrenia and Bi -Polar Disorder”

To ensure alignment with statutory requirements and recommendations:

The Centre seeks at all times to engage with mental health guidance and strategies, both national and local. At this time there are seven strategies/reports that have particular significance and give direction to the Centre's strategic aims:

- Five Year Forward View for Mental Health: One Year On - NHS - February 2017
- County Durham Public Mental Health Report - All the lonely people: social isolation and loneliness in County Durham - December 2014
- County Durham Joint Health and Wellbeing Strategy 2016/2019
- County Durham Joint Strategic Needs Assessment Key Messages 2016
- Self-Harm and Suicide Audit 2012/14 County Durham - Durham County Council - July 2017
- County Durham Mental Health and Wellbeing Strategic Plan 2018/2021
- County Durham Vision 2019-2035

Status

The organisation is a charitable company limited by guarantee, incorporated on 21st December 1988 and registered as a Charity on 16 May 1989.

The company was established under a Memorandum of Association which established the objects and powers of the charitable company and is governed under its Articles of Association.

Company Registration Number
Charity Registration Number

2330506
701514

The Board of Directors

The directors of the charity are its trustees for the purpose of charity law and are collectively referred to as the Board. As set out in the Articles of Association the directors retire by rotation every three years and are eligible for re-election at the Annual General Meeting.

Company Directors / Trustees as at the 2022 AGM:

Louise Toms	Elected	26/11/21	Retires	2024
Fred Robinson (Chair)	Elected	26/11/21	Retires	2024
Jeff Dean (Treasurer)	Elected	26/11/22	Retires	2025
Bob Kelly	Elected	29/11/19	Retired	2022
David Rushton (Deputy Chair)	Elected	26/11/22	Retires	2025
David Shipman	Elected	26/11/22	Retires	2025
David Blazey (Secretary)	Elected	27/11/20	Retires	2023
Kay Parker	Elected	27/11/20	Retires	2023
Daniel Rippon	Elected	27/11/20	Retires	2023
Jennifer Lamb	Elected	26/11/21	Retires	2024

Registered Office and Operation Address

3 Waddington Street, Durham City, DH1 4BG.

Auditors

Ribchesters, Chartered Accountants, Finchale House, Belmont Business Park, Durham.
DH1 1TW

Bankers

Lloyds Bank, 19 Market Place, Durham. DH1 3AN



The chaps from our male Cree group.

Structure, Governance and Management of the Charity

The organisation's governing documents are the Memorandum of Association and the Articles of Association dated 28th November 2011.

Waddington Street Centre (WSC) is governed by a Board of Directors/Trustees which is responsible for managing the business of the Company. The Board meets approximately every six weeks and receives regular reports from the Centre's Management team, the Treasurer and WSC Members. The Board also has three sub-committees which meet when required and report to the Board. These are: the Finance Sub Committee, the Personnel (Employment) sub-committee and the Health & Safety sub-committee. Other working groups are set up by the Board as required.

WSC seeks to have a Board which combines complementary skills and experiences and which has strong member representation. Consequently, individuals may be asked to consider serving as Directors/Trustees because they offer particular skills or experience, come from partner organisations, or are able to offer the perspective of service users (or 'members', as we call them). WSC encourages and supports members to become formally involved in helping to run the Centre. We do this through focus groups and formal helping roles including: reviewing procedures, buddies and peer support groups. People with lived experience have much to share and contribute. Our Valued Views Group, made up of our members, meet before each Board meeting. Their thoughts and views are then fed into the Board. Keeping member needs and views at the forefront of decisions is important to our Trustees.



Poetry Jam Participants

Risk and Financial Review, Reserve and Investment Policy

Risk Review

The Board of Trustee Directors conducts an annual review of the major risks to which the charity is exposed and systems have been established to mitigate those risks. The current risk management strategy and risk register were agreed by the Board at their meeting on 8th August 2022. The register is to be reviewed by trustees at their meeting on 2nd October 2023. The trustees recognise that any major risks to which the charity is exposed need to be reviewed and systems put in place to mitigate those risks. To that end Waddington Street Centre Limited (WSC) is continually monitoring and managing its risk, reviewing the corporate risk register and ensuring action plans are in place to manage its key risks.

Financial Review

The financial results for the charity are detailed in the annexed Statement of Financial Activities and Balance Sheet, together with the related notes.

In summary, WSC made an overall deficit of £90,778 during 2022-2023 (compared to a surplus of £38,328 during 2021-2022). This year's deficit was due to the charity going through a major system change in funding, from an individual service level agreement to a partnership agreement via the Durham Mental Wellbeing Alliance (DWMA). WSC joined DMWA on 1st April 2022 guaranteeing funding for 7 years (with possibly an additional 3 years). The closure of the former housing provision provided through the service level agreement had a significant impact on the funding income decrease within the year.

It is worth noting that included in the deficit of £90,778, that within the year £43,360 was spent from funding that was restricted in its use having been received in an earlier period.

Trustees are aware going forwards that the DWMA annual funding, which is not index linked, is not covering the cost of the Centre's Alliance service provision. This contributed in part to the deficit. As a result, additional funding is being sought to enable WSC to continue to provide a similar level of service provision to its members as prior to 1st April 2022. This will be ongoing and will be developed by trustees and management in line with business development plan priorities for 2023-2026.

Reserve Policy

Waddington Street Centre provides support to people with significant mental health issues.

Hence, many of its members are vulnerable, and are very reliant upon our services. Therefore, we are very mindful to ensure we can support them for a period of time so that there is opportunity to try to ensure that the future support required by each individual member is in place before they are discharged from our support services. In short, a transition period would be required to cover any eventuality.

Additionally, as an ongoing exercise within our business development plan, we are constantly reviewing and reporting internally and externally on our finances and looking at different funding streams. Due to the need to keep running our services at the level we have been and to an increase in member referrals through the Alliance we need to hold reserves to ensure we have sufficient to cover the services our members need and have come to rely on. As we are working in a new funding system and an economic downturn, which itself has a knock-on effect with charitable giving, we are also looking at ways to future-proof the charity for the years to come.

For these reasons, the board has established a Reserve Policy whereby free reserves (unrestricted current assets less unrestricted current liabilities) should ideally be at least equal to unrestricted expenditure during the past 12 months.

The board has also decided and approved that included in our Reserve Policy to cover future-proofing to designate the follow sums in areas of expenditure that are important to the centre's upkeep and development:

Building maintenance and upkeep	£20k
(Year 2) Mini bus replacement - £10kpa x 6 yrs. (£60k)	£20k
(Year 1) Technology infrastructure incl. IT renewal - £10k pa x 3 yrs.	£10k
Development and Personnel costs	<u>£58k</u>
Designated funds	£108k

From the 2022-2023 accounts Free Reserves stand at £321k and unrestricted expenditure during the past 12 months was £269k. With £108k designated by the board from Reserves the Centre has £213k available, equating to circa. 9 months running costs.

The board is working towards meeting the requirements of its Reserve Policy.

Investment Policy

Although no investments are currently held, the charity has the power to make any investment which the Board sees fit.

Relationships

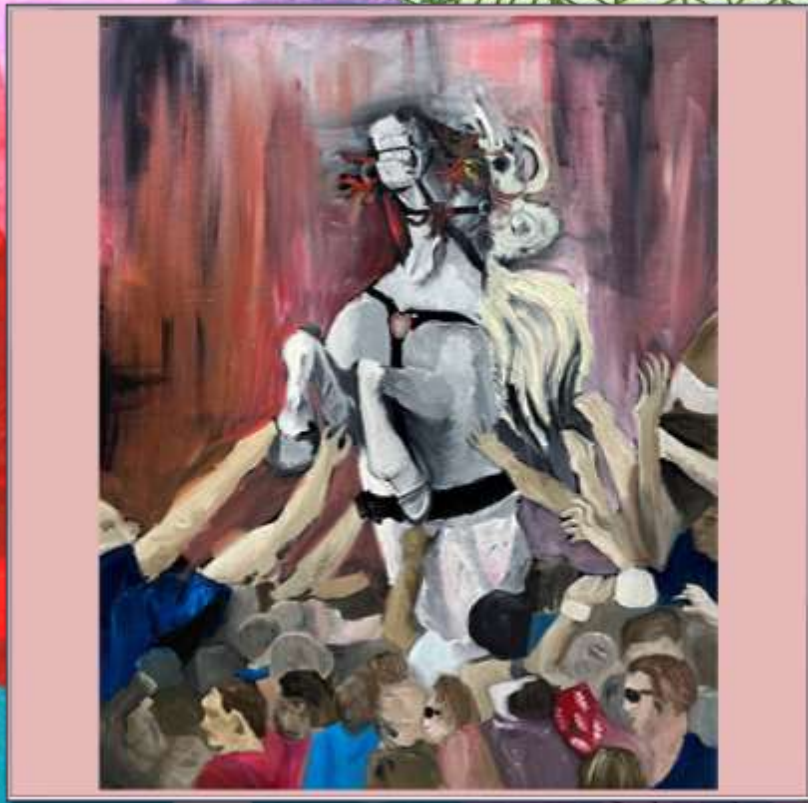
WSC has extensive relationships with other organisations both in the statutory and voluntary sectors. Relationships and networks include:

- Partner in the Durham Mental Wellbeing Alliance, Commissioned by Durham County Council
- New College Durham. This Grade 1 OFSTED - rated Further Education College strongly supports the work of the Centre and provides a wide range of educational courses and activities for members.
- NHS Trusts. Regular contacts with health professionals, notably with the Lanchester Road Hospital (Tees, Esk and Wear Valleys NHS Trust).
- Durham County Council Public Health. We receive funding to operate Men's and Women's Crees. A mostly peer support driven model which seeks to reduce social isolation and suicide rates.
- Durham University Community Outreach and Engagement. Work with the University's outreach programme enhances venue and training possibilities for Centre services particularly around physical health activities including the use of football and gym facilities.
- Durham and Darlington County Wide Forum – A Service User and Carer led group.
- Waddington Street United Reformed Church – Supports the WSC, most notably by allowing us use of their premises.

In addition to the above, Waddington Street Centre, through its networks and partnerships, sits on the:

- Resilient Communities Group
- County Durham Mental Health Provider & Stakeholder Forum
- Mental Health Anti Stigma and Discrimination Group – 'Stamp it Out.'
- Partners in the Durham Mental Wellbeing Alliance.
- Durham Community Action Volunteers Forum
- Durham Community Action – Better Together Forum
- County Durham Vision Engagement Forum

WSC has relationships with many other organisations. It is a member of umbrella and infrastructure organisations in the voluntary sector, and has close connections and receives generous support from several charitable trusts. The Centre liaises with Durham Community Action and provides volunteering opportunities.



Art Work by Members

Waddington Street Centre Limited - Organisational Chart 2022/23

WSC Organisation Chart



Staffing

WSC currently has 13 paid staff members.

- Ali Lee – Centre Manager
- Claire McGrother – Finance Officer
- Craig Rundle – Saturday Art Tutor & YASC Support Worker (to March 2023)
- Fergus Grant – Support Worker / Housing Support Worker
- Helen Fox – Support Worker to April 2023
- Helen Ogilvie – Support Worker
- Paula Cresswell – Senior Support Worker
- Peter Graham-Smith – Administration Officer
- Sam Mason – Housing Co-ordinator to December 2023 then became Waddy Feel Good Service Coordinator.
- Sandie Greenwood – Digital Champion to March 2023
- Steve Wakefield – Assistant Manager

The Centre also has up to 12 voluntary workers helping to provide services and support, including volunteering inputs from Board members. We also have members who take on formalised helping roles. These 'Waddy Helpers' have worked hard over the last year to support peers, lead activities and assist with fundraising events such as bake sales and pre-loved sales. Their support is invaluable and appreciated by our community. Well done everyone!



Members of the Waddy team

What our members say.....

I returned to the Centre after some time away, have really missed the place and people. Great to be doing art again. My wife says I seem happier.

I have many friends here and life is just easier with good people around you – thanks Waddy.

We have a laugh and I love the Crazy Creatures sessions. Meeting the animals makes us feel great and more relaxed.

I get support with benefits and there is always someone to talk to when you need help.

The free hot drinks were appreciated over the winter. Nice to know that people who may be struggling had some help.

I love helping in the café. Gives me a purpose and helps the team out. We all need our cuppas.

I love the art group and being creative. Really takes my mind off my problems. Have also made good friends here”

Waddy Feel Good Service – Physical Health

Since September 2023 WSC has been focused on the development of our new service which promotes better physical health outcomes for those living with mental health needs. Statistics tell us that people living with long term mental illness live on average 15 years less than the general population. We feel this is unacceptable and want to enthuse and support our members to look after their physical health too. Supporting people to engage in group exercise activities has proven to be the best approach. It can be hard for many of us to remain motivated to regularly exercise and this can be particularly challenging in mental health settings. The peer support aspects of group work mean that members are able to encourage each other and motivate one another to remain involved. We've also been able to offer taster sessions in activities such as Dance, New Age Curling and Pilates. Regular consultation with our members means that people can tell us what they want to try. Curling has proved particularly popular and we now have a peer led group who meet weekly to play.

We believe that everyone can do a little more to look after themselves and if it's fun then great!



Football and Curling Groups.

Numbers of people supported in the last year.



97 Participants per term - New College Durham Courses



60 Participants in the last year – Waddy Feel Good Service (Physical)



100 Participants per week – Daily Social Sessions



29 Participants per week – Saturday Support Group.



7 people were supported with Housing,



10 people were supported by the Young Adult Support Café (YASC)



30 people supported with digital support. Via our Digital Champion Project



12 Participants per week – Men's Cree



17 Participants per week – Women's Cree

Learning based activities.

Our ongoing partnership with NCD remains one of our most important. We participated in an Ofsted inspection in November 2022. It was a great pleasure to share the value of learning and the impact it has on our people. Many of our members report poor past experiences of school or other formal learning environments. Developing programmes of learning which challenge and stretch our learners is important but ultimately it should be fun too.

Our courses and the opportunities they bring for personal development are paramount. It has been wonderful to have them up and running again after Covid. It is easy to misplace your confidence and former interests when you are ill. Our courses give people the opportunity to try new things in a supportive and non-pressured environment. Our learners are able to discover and develop skills and knowledge which promotes better wellbeing and self-esteem. They take on new identities as artists, writers and musicians. Our Centre is packed to the rafters with highly creative and talented folks. Our job is just to help them find and recognise their true abilities.

Thank you to New College Durham and their tutors. We are proud to be part of such a positive partnership which brings so much benefit to our members.



Waddy Member and Learner - CJ.

Waddy Helpers

We've always believed in keeping folks busy. Having a sense of purpose and a reason to get out of bed is important for good mental health. We do however fully appreciate that there are many barriers and challenges for those who are struggling with their mental health.

The most important thing at WSC is providing the best possible opportunities for people. Nothing makes us happier than seeing people thrive.

Expressing gratitude is important for us and our members often want to express their thanks to WSC for the support they receive. The notion of 'giving back' is very important to them and so the development of peer helping roles has been a mutually beneficial addition.

We currently have a pool of 14 Waddy helpers who support in the following ways: running our kitchen; leading activities and classes; helping us to look after the building, garden and minibus, buddying and supporting other peers. We even have our very own Poet Laureate.

As we become increasingly busier, having these additional helping hands is invaluable.

There's something extra special about everyone working together to achieve a shared goal – true community.

We hope to keep developing and expanding this offer. Next year we want to offer more training for our Waddy Helpers and we aspire to support people into volunteering roles outside of Waddington Street Centre.



Successes and achievements in 2022/2023

- **Our part in the launch of the Durham Mental Wellbeing Alliance (DMWA)**
- **Our continued role within DMWA and its development.**
- **Raising £26,000 through our own fundraising activities.**
- **Purchasing and planting a tree in Wharton Park.**
- **Completing a research project in partnership with Stamp it Out and Northumbria University.**
- **The return of our monthly Poetry Jam.**
- **The continued growth of the Waddy Helper initiative.**
- **Getting back to 'In person' meetings after Covid restrictions.**
- **Providing a warm space for people over the winter months.**
- **Launch of our WFGS, Physical Health Service.**
- **Successfully winding down our supported housing and rehoming our tenants.**
- **The drafting and creation of our 2023-2026 Business Development Plan.**

Aspirations for 2023/24

- **Maintaining good financial health.**
- **A new member of staff for the support team.**
- **Greater focus on supporting those from the LBGTQ+ community**
- **Recruitment and training of new volunteers.**
- **Developing stronger Co-production activities for WSC and Alliance Service Users.**
- **Visiting other services to learn from good practice.**
- **Being 'greener' in our daily practices.**

Other Groups and Centre Activities

Men's and Women's Crees.

Our Crees allow us to provide gender-specific groups outside of our day time operations. These informal, co-produced groups are aimed to create safe, social spaces where peers can offer support to one another, form new friendships and choose the activities they enjoy. We've been on trips to garden centres and galleries, played bingo, darts and dominoes, exercised our lungs with karaoke, created beautiful crafts and explored wellbeing activities which promote better physical and mental health. Pizza and cake eating has also been involved along the way. Girls (and boys) just want to have fun.



Saturday Support.

Saturday social and art groups remain one of our most popular and beloved sessions. The slightly more relaxed atmosphere is welcomed by those who couldn't socialise elsewhere due to the generally busy nature of Saturdays. Although Saturday support remains a closed session for members we do hope to return to a drop-in model sometime next year. Weekend groups are still quite rare so we are particularly proud to be able to offer this kind of support.



Some powerful words from our own poet laureate.

Acts of Kindness

This verse holds much significance, yet slightly overdue,
For some time now, I've been amazed by every one of you.
Especially in murky times where all is so surreal,
Where scars within humanity miraculously heal.
An era where we must accept our frightful world of change,
We never could have wondered - as bizarre as very strange.
But headway is still possible and answers we must seek,
With hope and generosity, and courage week-to-week.
Caring hearts and souls ring true in family and friends,
Regardless of our issues, we must strive to make amends.
There's challenges appearing yet we'll overcome the fight,
Your spirits are remarkable, your efforts bold and bright.
Credited, this journey is a tough one to believe,
But if we pull together we can certainly achieve.
All are now adapting when engaging in our tasks,
Essential journeys only too whilst kitted in our masks.
We should embrace the simple fact we've knuckled down and fought,
Mindful of each other, warmly offering support.
Although these days are difficult, we should feel reassured,
Weathering this virus during all we have endured.
My gratitude to everyone who've eased my trying mission,
Supportive texts and phone calls checking in on my condition.
And that's the point I'm making - all have pulled together well,
Bless you all eternally throughout this crazy spell.
Remember that collectively we'll reach the goals we're chasing,
Acts of kindness helps us with the trials that we are facing.

Cristopher Short

We can't do our important work without the help and support of so many people.....

Particular thanks must go to; Support Staff, Volunteers, Tutors, the Waddington Street United Reformed Church, Durham University, New College Durham, Durham County Council, Donors including – P&M Lovell, Shakespeare Temperance Trust, Henry Smith Charity and the United Reformed Church. Thank you to all of our individual donors also.

Here's how we've used our donations

Every donation helps us to keep the Centre and its services going. The after-effects of Covid and the ongoing 'Cost of Living Crisis' means that our services are more important than ever.

We currently support 137 people per week across our Monday - Saturday and evening provision.

Over the winter months, November -February, it was essential that we opened our doors as a warm space. Providing vulnerable people with a safe and warm space was a key focus for us. Winter is a difficult time within the Mental Health Community at the best of times - we knew that this last winter would provide even greater challenges and felt that we must be pro-active about offering further support. £693 of donations received, helped us to provide free hot drinks and soups to those most in need.

We've also been focused on the importance of Digital Inclusion. Many of our members have limited access to the internet or are nervous about using it. Many of the people we support are excluded because of digital poverty. We spent £3,500 towards the employment of a Digital Champion - a support role focused specifically on Digital Inclusion and internet safety. As a result, more people now have access to the internet and can more safely access the online services they need.

Young People have struggled greatly as a result of Covid - our Young Adult Support Cafe (YASC) has been an important social space for young people to come together and receive support from peers and staff. £4,073 was used toward staffing costs and activities such as gaming and arts and crafts.

Waddington Street Centre is a place-based service. This is important to people as it provides a safe community building for our members to socialise, receive emotional and practical support and get involved with educational activities. It does however mean that to provide this support we have to fund the infrastructure of our building. By doing this we provide a safe and comfortable foundation to build services upon. We want our members to feel valued and we do this by keeping our building warm, well decorated, cosy, safe and eco-friendly. Environment and access to up to date resources has a hugely positive impact on mental wellbeing. Dingy buildings and under resourced services do not inspire good mental health!



One of our members who raised money for us.

We also want to get people out and about and enjoying social experiences that they may not be able to access themselves. Our minibus, purchased with donations in 2021- the year of our 40th anniversary, enables us to take people to a range of activities. These include theatre and gallery visits and trips out to beauty spots across the North East.

We've also used donations to:

- Transform our backyard into a comfortable and visual community space.
- Help paying for minibus running costs
- Install new lighting in our art studio
- Buy new equipment for our busy kitchen
- Maintain of our lift - essential for those with physical disabilities.



**REPORT OF THE TRUSTEES
FOR THE YEAR ENDED 31 MARCH 2023**

The trustees who are also directors of the charity for the purposes of the Companies Act 2006, present their report with the financial statements of the charity for the year ended 31 March 2023. The trustees have adopted the provisions of Accounting and Reporting by Charities: Statement of Recommended Practice applicable to charities preparing their accounts in accordance with the Financial Reporting Standard applicable in the UK and Republic of Ireland (FRS 102) (effective 1 January 2019).

STRUCTURE, GOVERNANCE AND MANAGEMENT

Governing document

The charity is controlled by its governing document, a deed of trust, and constitutes a limited company, limited by guarantee, as defined by the Companies Act 2006.

REFERENCE AND ADMINISTRATIVE DETAILS

Registered Company number

02330506 (England and Wales)

Registered Charity number

701514

Registered office

3 Waddington Street
Durham City
DH1 4BG

Trustees

J F F Robinson (Chair)
J Dean (Treasurer)
D W Rushton (Deputy Chair) (resigned 14/8/2023)
W R Kelly (resigned 3/10/2022)
K Parker
D Rippon
L Toms
D Shipman
D Blazey
J Lamb
J Dodson (appointed 8/8/2022)

Company Secretary

D Blazey

Independent Examiner

David Holloway BA(hons) FCA DChA
Ribchesters
Chartered Accountants
Finchale House
Belmont Business Park
Durham
DH1 1TW

Approved by order of the board of trustees on 7 September 2023 and signed on its behalf by:



J F F Robinson - Trustee

**INDEPENDENT EXAMINER'S REPORT TO THE TRUSTEES OF
WADDINGTON STREET CENTRE LTD (REGISTERED NUMBER: 02330506)**

Independent examiner's report to the trustees of Waddington Street Centre Ltd ('the Company')

I report to the charity trustees on my examination of the accounts of the Company for the year ended 31 March 2023.

Responsibilities and basis of report

As the charity's trustees of the Company (and also its directors for the purposes of company law) you are responsible for the preparation of the accounts in accordance with the requirements of the Companies Act 2006 ('the 2006 Act').

Having satisfied myself that the accounts of the Company are not required to be audited under Part 16 of the 2006 Act and are eligible for independent examination, I report in respect of my examination of your charity's accounts as carried out under Section 145 of the Charities Act 2011 ('the 2011 Act'). In carrying out my examination I have followed the Directions given by the Charity Commission under Section 145(5) (b) of the 2011 Act.

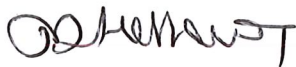
Independent examiner's statement

Since your charity's gross income exceeded £250,000 your examiner must be a member of a listed body. I can confirm that I am qualified to undertake the examination because I am a member of the Institute of Chartered Accountants in England and Wales, which is one of the listed bodies.

I have completed my examination. I confirm that no matters have come to my attention in connection with the examination giving me cause to believe:

1. accounting records were not kept in respect of the Company as required by Section 386 of the 2006 Act; or
2. the accounts do not accord with those records; or
3. the accounts do not comply with the accounting requirements of Section 396 of the 2006 Act other than any requirement that the accounts give a true and fair view which is not a matter considered as part of an independent examination; or
4. the accounts have not been prepared in accordance with the methods and principles of the Statement of Recommended Practice for accounting and reporting by charities (applicable to charities preparing their accounts in accordance with the Financial Reporting Standard applicable in the UK and Republic of Ireland (FRS 102)).

I have no concerns and have come across no other matters in connection with the examination to which attention should be drawn in this report in order to enable a proper understanding of the accounts to be reached.



David Holloway BA(hons) FCA DChA

Ribchesters
Finchale House
Belmont Business Park
Durham
DH1 1TW

7 September 2023

WADDINGTON STREET CENTRE LTD

**STATEMENT OF FINANCIAL ACTIVITIES
FOR THE YEAR ENDED 31 MARCH 2023**

	Notes	Unrestricted funds £	Restricted funds £	2023 Total funds £	2022 Total funds £
INCOME AND ENDOWMENTS FROM					
Donations and legacies	2	18,956	1,634	20,590	48,108
Charitable activities					
Waddington Street Resource Centre	4	157,144	18,586	175,730	177,253
Floating Support		-	-	-	6,819
Lanchester Road Hospital Discharge Service		-	-	-	3,693
Accommodation Support		41,819	-	41,819	148,173
Waddy Feel Good Service		-	22,000	22,000	22,000
Investment income	3	3,297	-	3,297	2,217
Total		<u>221,216</u>	<u>42,220</u>	<u>263,436</u>	<u>408,263</u>
EXPENDITURE ON					
Charitable activities					
Waddington Street Resource Centre		215,296	63,746	279,042	215,472
Floating Support		-	-	-	5,628
Lanchester Road Hospital Discharge Service		-	-	-	3,632
Accommodation Support		53,338	-	53,338	121,703
Waddy Feel Good Service		-	21,834	21,834	23,500
Total		<u>268,634</u>	<u>85,580</u>	<u>354,214</u>	<u>369,935</u>
NET INCOME/(EXPENDITURE)		(47,418)	(43,360)	(90,778)	38,328
RECONCILIATION OF FUNDS					
Total funds brought forward		398,283	258,718	657,001	618,673
TOTAL FUNDS CARRIED FORWARD		<u><u>350,865</u></u>	<u><u>215,358</u></u>	<u><u>566,223</u></u>	<u><u>657,001</u></u>

The notes form part of these financial statements

WADDINGTON STREET CENTRE LTD (REGISTERED NUMBER: 02330506)

**BALANCE SHEET
31 MARCH 2023**

	Notes	Unrestricted funds £	Restricted funds £	2023 Total funds £	2022 Total funds £
FIXED ASSETS					
Tangible assets	9	29,906	201,566	231,472	242,981
CURRENT ASSETS					
Debtors	10	13,250	-	13,250	8,149
Cash at bank and in hand		317,167	53,176	370,343	417,685
		<u>330,417</u>	<u>53,176</u>	<u>383,593</u>	<u>425,834</u>
CREDITORS					
Amounts falling due within one year	11	(9,457)	(39,385)	(48,842)	(11,814)
NET CURRENT ASSETS		<u>320,960</u>	<u>13,791</u>	<u>334,751</u>	<u>414,020</u>
TOTAL ASSETS LESS CURRENT LIABILITIES		<u>350,866</u>	<u>215,357</u>	<u>566,223</u>	<u>657,001</u>
NET ASSETS		<u>350,866</u>	<u>215,357</u>	<u>566,223</u>	<u>657,001</u>
FUNDS	12				
Unrestricted funds				350,866	398,283
Restricted funds				215,357	258,718
TOTAL FUNDS				<u>566,223</u>	<u>657,001</u>

The charitable company is entitled to exemption from audit under Section 477 of the Companies Act 2006 for the year ended 31 March 2023.

The members have not required the company to obtain an audit of its financial statements for the year ended 31 March 2023 in accordance with Section 476 of the Companies Act 2006.

The trustees acknowledge their responsibilities for

- (a) ensuring that the charitable company keeps accounting records that comply with Sections 386 and 387 of the Companies Act 2006 and
- (b) preparing financial statements which give a true and fair view of the state of affairs of the charitable company as at the end of each financial year and of its surplus or deficit for each financial year in accordance with the requirements of Sections 394 and 395 and which otherwise comply with the requirements of the Companies Act 2006 relating to financial statements, so far as applicable to the charitable company.

These financial statements have been prepared in accordance with the provisions applicable to charitable companies subject to the small companies regime.

The financial statements were approved by the Board of Trustees and authorised for issue on 7 September 2023 and were signed on its behalf by:



J F F Robinson - Trustee

The notes form part of these financial statements

WADDINGTON STREET CENTRE LTD

NOTES TO THE FINANCIAL STATEMENTS FOR THE YEAR ENDED 31 MARCH 2023

1. ACCOUNTING POLICIES

Basis of preparing the financial statements

The financial statements of the charitable company, which is a public benefit entity under FRS 102, have been prepared in accordance with the Charities SORP (FRS 102) 'Accounting and Reporting by Charities: Statement of Recommended Practice applicable to charities preparing their accounts in accordance with the Financial Reporting Standard applicable in the UK and Republic of Ireland (FRS 102) (effective 1 January 2019)', Financial Reporting Standard 102 'The Financial Reporting Standard applicable in the UK and Republic of Ireland' and the Companies Act 2006. The financial statements have been prepared under the historical cost convention.

Income

All income is recognised in the Statement of Financial Activities once the charity has entitlement to the funds, it is probable that the income will be received and the amount can be measured reliably.

- Voluntary income is received by way of grants and donations are included in full in the Statement of Financial Activities when the charity becomes entitled. Grants, where entitlement is not conditional on the delivery of a specific performance by the charity, are recognised when the charity becomes unconditionally entitled to the grant.
- Donated services and facilities are included at the value to the charity where this can be quantified. The value of services provided by volunteers has not been included in these accounts. Assets donated are recognised in full as donations and fixed assets.
- Incoming resources from charitable trading activities are accounted for when earned.
- Grants and fees received for current year expenditure and grants for purchase of fixed assets are recognised in full in the Statement of Financial Activities in the period in which they are received, provided that the conditions for receipt have been complied with.
- Income is deferred only where the criteria for recognition as incoming resources in the Statement of Financial Activities does not exist at the balance sheet date.

Expenditure

Liabilities are recognised as expenditure as soon as there is a legal or constructive obligation committing the charity to that expenditure, it is probable that a transfer of economic benefits will be required in settlement and the amount of the obligation can be measured reliably. Expenditure is accounted for on an accruals basis and has been classified under headings that aggregate all cost related to the category. Where costs cannot be directly attributed to particular headings they have been allocated to activities on a basis consistent with the use of resources.

- Costs of generating funds comprise the costs associated with attracting voluntary income and the costs of trading for fundraising purposes including the charity's visitor centres and from the commercial trading activities of the company's subsidiary.
- Direct staff costs have been allocated to the activity categories within the Statement of Financial Activities according to the staff time spent. Other direct costs are allocated according to the activity. Support costs have been apportioned based on an average of all staff time spent that cannot be allocated specifically to one activity.
- Charitable expenditure comprises those costs incurred by the charity in the delivery of its activities and services for its beneficiaries. It includes both costs that can be allocated directly to such activities and those costs of an indirect nature necessary to support them.
- Governance costs include those costs associated with meeting the constitutional and statutory requirements of the charity and include the audit fees and costs linked to the strategic management of the charity.
- All costs are allocated between the expenditure categories of the SOFA on a basis designed to reflect the use of the resource. Costs relating to a particular activity are allocated directly; others are apportioned on

Allocation and apportionment of costs

All costs are allocated between the expenditure categories of the Statement of Financial Activities on a basis designed to reflect the use of the resource. Costs relating to a particular activity are allocated directly, others are apportioned on an appropriate basis.

Tangible fixed assets

Depreciation is provided at the following annual rates in order to write off each asset over its estimated useful life.

WADDINGTON STREET CENTRE LTD

NOTES TO THE FINANCIAL STATEMENTS - continued
FOR THE YEAR ENDED 31 MARCH 2023

1. ACCOUNTING POLICIES - continued

Tangible fixed assets

Freehold property	- 2% on cost
Improvements to property	- 25% on cost
Plant and machinery	- 20% on cost
Fixtures and fittings	- 35% on cost
Caravan & minibus	- 12.5% on cost
Computer equipment	- 33% on cost

Taxation

The charity is exempt from corporation tax on its charitable activities.

Fund accounting

Unrestricted funds can be used in accordance with the charitable objectives at the discretion of the trustees.

Restricted funds can only be used for particular restricted purposes within the objects of the charity. Restrictions arise when specified by the donor or when funds are raised for particular restricted purposes.

Further explanation of the nature and purpose of each fund is included in the notes to the financial statements.

Hire purchase and leasing commitments

Rentals paid under operating leases are charged to the Statement of Financial Activities on a straight line basis over the period of the lease.

Pension costs and other post-retirement benefits

The charitable company operates a defined contribution pension scheme. Contributions payable to the charitable company's pension scheme are charged to the Statement of Financial Activities in the period to which they relate.

2. DONATIONS AND LEGACIES

	2023	2022
	£	£
Donations	<u>20,590</u>	<u>48,108</u>

3. INVESTMENT INCOME

	2023	2022
	£	£
Deposit account interest	<u>3,297</u>	<u>2,217</u>

WADDINGTON STREET CENTRE LTD

**NOTES TO THE FINANCIAL STATEMENTS - continued
FOR THE YEAR ENDED 31 MARCH 2023**

4. INCOME FROM CHARITABLE ACTIVITIES

				2023	2022
	Waddington Street Resource Centre £	Accommodation Support £	Waddy Feel Good Service £	Total activities £	Total activities £
Local authority funding	134,382	38,879	-	173,261	245,668
Other income	22,762	2,940	-	25,702	25,163
Grants	18,586	-	22,000	40,586	87,107
	<u>175,730</u>	<u>41,819</u>	<u>22,000</u>	<u>239,549</u>	<u>357,938</u>

Grants received, included in the above, are as follows:

	2023 £	2022 £
Durham County Council - 2 Cree Projects	8,000	8,000
NHS Community Connector Grant	-	24,138
Durham County Council- Waddy Feel Good Service	22,000	22,000
Henry Smith's Charity - Y-ASC	1,440	-
Investing in Children - National Lottery Community Fund - Y-ASC	-	10,299
Durham County Council - Infection Control Grant	-	6,354
Y-ASC 21-25 Zoom Project	-	5,347
Durham AAP Mental Health Digital Inclusion	-	10,000
United Reform Church	-	970
County Durham Sport Together Fund	2,824	-
Cycling UK	1,822	-
The Shakespeare Temperance Trust	1,000	-
PM Lovell	2,000	-
St James Charity Foundation	1,500	-
	<u>40,586</u>	<u>87,108</u>

5. NET INCOME/(EXPENDITURE)

Net income/(expenditure) is stated after charging/(crediting):

	2023 £	2022 £
Depreciation - owned assets	17,038	17,504
Hire of plant and machinery	1,326	2,335
(Deficit)/surplus on disposal of fixed assets	56	(2,500)
	<u>18,420</u>	<u>17,339</u>

WADDINGTON STREET CENTRE LTD

**NOTES TO THE FINANCIAL STATEMENTS - continued
FOR THE YEAR ENDED 31 MARCH 2023**

6. TRUSTEES' REMUNERATION AND BENEFITS

There were no trustees' remuneration or other benefits for the year ended 31 March 2023 nor for the year ended 31 March 2022.

Trustees' expenses

There were no trustees' expenses paid for the year ended 31 March 2023 nor for the year ended 31 March 2022.

7. STAFF COSTS

	2023	2022
	£	£
Wages and salaries	192,597	182,544
Social security costs	9,324	6,452
Other pension costs	7,468	5,453
	<u>209,389</u>	<u>194,449</u>

The average monthly number of employees during the year was as follows:

	2023	2022
Charitable activities	7	9
Office	1	1
Management	2	2
	<u>10</u>	<u>12</u>

No employees received emoluments in excess of £60,000.

8. COMPARATIVES FOR THE STATEMENT OF FINANCIAL ACTIVITIES

	Unrestricted funds	Restricted funds	Total funds
	£	£	£
INCOME AND ENDOWMENTS FROM			
Donations and legacies	48,108	-	48,108
Charitable activities			
Waddington Street Resource Centre	113,116	64,137	177,253
Floating Support	6,819	-	6,819
Lanchester Road Hospital Discharge Service	3,693	-	3,693
Accommodation Support	148,173	-	148,173
Waddy Feel Good Service	-	22,000	22,000
Investment income	2,217	-	2,217
Total	<u>322,126</u>	<u>86,137</u>	<u>408,263</u>
EXPENDITURE ON			
Charitable activities			
Waddington Street Resource Centre	145,962	69,510	215,472
Floating Support	5,628	-	5,628
Lanchester Road Hospital Discharge Service	3,632	-	3,632
Accommodation Support	121,703	-	121,703
Waddy Feel Good Service	-	23,500	23,500
Total	<u>276,925</u>	<u>93,010</u>	<u>369,935</u>

WADDINGTON STREET CENTRE LTD

**NOTES TO THE FINANCIAL STATEMENTS - continued
FOR THE YEAR ENDED 31 MARCH 2023**

8. COMPARATIVES FOR THE STATEMENT OF FINANCIAL ACTIVITIES - continued	Unrestricted funds £	Restricted funds £	Total funds £
	<u> </u>	<u> </u>	<u> </u>
NET INCOME/(EXPENDITURE)	45,201	(6,873)	38,328
RECONCILIATION OF FUNDS			
Total funds brought forward	353,082	265,591	618,673
	<u> </u>	<u> </u>	<u> </u>
TOTAL FUNDS CARRIED FORWARD	<u>398,283</u>	<u>258,718</u>	<u>657,001</u>
9. TANGIBLE FIXED ASSETS	Freehold property £	Improvements to property £	Plant and machinery £
	<u> </u>	<u> </u>	<u> </u>
COST			
At 1 April 2022	434,402	31,862	52,974
Additions	-	-	2,802
Disposals	-	-	(5,506)
	<u> </u>	<u> </u>	<u> </u>
At 31 March 2023	434,402	31,862	50,270
DEPRECIATION			
At 1 April 2022	220,508	31,862	52,574
Charge for year	8,688	-	526
Eliminated on disposal	-	-	(5,450)
	<u> </u>	<u> </u>	<u> </u>
At 31 March 2023	229,196	31,862	47,650
NET BOOK VALUE			
At 31 March 2023	<u>205,206</u>	<u> </u>	<u>2,620</u>
At 31 March 2022	<u>213,894</u>	<u> </u>	<u>400</u>

WADDINGTON STREET CENTRE LTD

**NOTES TO THE FINANCIAL STATEMENTS - continued
FOR THE YEAR ENDED 31 MARCH 2023**

9. TANGIBLE FIXED ASSETS - continued

	Fixtures and fittings £	Caravan & minibus £	Computer equipment £	Totals £
COST				
At 1 April 2022	35,866	29,995	18,119	603,218
Additions	-	-	2,783	5,585
Disposals	(1,352)	-	-	(6,858)
	<u>34,514</u>	<u>29,995</u>	<u>20,902</u>	<u>601,945</u>
DEPRECIATION				
At 1 April 2022	35,866	1,875	17,552	360,237
Charge for year	-	7,499	325	17,038
Eliminated on disposal	(1,352)	-	-	(6,802)
	<u>34,514</u>	<u>9,374</u>	<u>17,877</u>	<u>370,473</u>
NET BOOK VALUE				
At 31 March 2023	<u>-</u>	<u>20,621</u>	<u>3,025</u>	<u>231,472</u>
At 31 March 2022	<u>-</u>	<u>28,120</u>	<u>567</u>	<u>242,981</u>

10. DEBTORS: AMOUNTS FALLING DUE WITHIN ONE YEAR

	2023 £	2022 £
Trade debtors	10,636	60
Other debtors	-	20
Prepayments and accrued income	2,614	8,069
	<u>13,250</u>	<u>8,149</u>

11. CREDITORS: AMOUNTS FALLING DUE WITHIN ONE YEAR

	2023 £	2022 £
Trade creditors	10,788	3,907
Accruals and deferred income	35,500	7,907
Accrued expenses	2,554	-
	<u>48,842</u>	<u>11,814</u>

WADDINGTON STREET CENTRE LTD

**NOTES TO THE FINANCIAL STATEMENTS - continued
FOR THE YEAR ENDED 31 MARCH 2023**

12. MOVEMENT IN FUNDS

	At 1.4.22 £	Net movement in funds £	Transfers between funds £	At 31.3.23 £
Unrestricted funds				
Waddington Street Centre	275,418	(35,762)	(13,445)	226,211
Old School House	80,210	(3,116)	(77,094)	-
Sherburn Hill Flats	10,000	(8,539)	(1,461)	-
Durham Samaritans Society (Out of Hours)	16,655	-	-	16,655
Minibus Replacement Fund	6,000	-	14,000	20,000
Building Maintenance Fund	10,000	-	10,000	20,000
Development and Personnel Costs	-	-	58,000	58,000
IT Infrastructure	-	-	10,000	10,000
	<u>398,283</u>	<u>(47,417)</u>	<u>-</u>	<u>350,866</u>
Restricted funds				
Waddington Street Centre	210,113	(8,547)	-	201,566
Cree Projects	4,618	887	-	5,505
YP Evening Project	2,201	(2,651)	450	-
Waddy Feel Good Service	6,298	166	-	6,464
YP Evenings 21 - 25	1,350	(900)	(450)	-
NHS Community Connector Grant	24,138	(24,138)	-	-
Durham AAP Mental Health Digital				
Inclusion	10,000	(10,000)	-	-
Cycling UK	-	1,822	-	1,822
	<u>258,718</u>	<u>(43,361)</u>	<u>-</u>	<u>215,357</u>
TOTAL FUNDS	<u><u>657,001</u></u>	<u><u>(90,778)</u></u>	<u><u>-</u></u>	<u><u>566,223</u></u>

Net movement in funds, included in the above are as follows:

	Incoming resources £	Resources expended £	Movement in funds £
Unrestricted funds			
Waddington Street Centre	179,396	(215,158)	(35,762)
Old School House	2,460	(5,576)	(3,116)
Sherburn Hill Flats	39,360	(47,899)	(8,539)
	<u>221,216</u>	<u>(268,633)</u>	<u>(47,417)</u>
Restricted funds			
Waddington Street Centre	-	(8,547)	(8,547)
Cree Projects	8,000	(7,113)	887
YP Evening Project	4,073	(6,724)	(2,651)
Waddy Feel Good Service	22,000	(21,834)	166
YP Evenings 21 - 25	-	(900)	(900)
NHS Community Connector Grant	-	(24,138)	(24,138)
Durham AAP Mental Health Digital			
Inclusion	3,501	(13,501)	(10,000)
Cycling UK	1,822	-	1,822
County Durham Sports Together Fund	2,824	(2,824)	-
	<u>42,220</u>	<u>(85,581)</u>	<u>(43,361)</u>
TOTAL FUNDS	<u><u>263,436</u></u>	<u><u>(354,214)</u></u>	<u><u>(90,778)</u></u>

WADDINGTON STREET CENTRE LTD

**NOTES TO THE FINANCIAL STATEMENTS - continued
FOR THE YEAR ENDED 31 MARCH 2023**

12. MOVEMENT IN FUNDS - continued

Comparatives for movement in funds

	At 1.4.21 £	Net movement in funds £	Transfers between funds £	At 31.3.22 £
Unrestricted funds				
Waddington Street Centre	169,686	17,477	83,738	270,901
Old School House	67,789	12,421	-	80,210
Greatham	72,825	14,003	(82,631)	4,197
Floating Support	1,831	1,192	(2,764)	259
Sherburn Hill Flats	4,296	47	5,657	10,000
Lanchester Road Hospital Discharge Service	-	61	-	61
Durham Samaritans Society (Out of Hours)	16,655	-	-	16,655
Minibus Replacement Fund	20,000	-	(14,000)	6,000
Building Maintenance Fund	-	-	10,000	10,000
	<u>353,082</u>	<u>45,201</u>	<u>-</u>	<u>398,283</u>
Restricted funds				
Waddington Street Centre	235,796	(25,683)	-	210,113
Cree Projects	3,452	1,166	-	4,618
YP Evening Project	875	1,326	-	2,201
Waddy Feel Good Service	7,798	(1,500)	-	6,298
DCC COVID 19 infection control grant	2,990	(2,990)	-	-
NHS CCG Digital Worker Grant	14,680	(14,680)	-	-
YP Evenings 21 - 25	-	1,350	-	1,350
NHS Community Connector Grant	-	24,138	-	24,138
Durham AAP Mental Health Digital Inclusion	-	10,000	-	10,000
	<u>265,591</u>	<u>(6,873)</u>	<u>-</u>	<u>258,718</u>
TOTAL FUNDS	<u><u>618,673</u></u>	<u><u>38,328</u></u>	<u><u>-</u></u>	<u><u>657,001</u></u>

WADDINGTON STREET CENTRE LTD

NOTES TO THE FINANCIAL STATEMENTS - continued
FOR THE YEAR ENDED 31 MARCH 2023

12. MOVEMENT IN FUNDS - continued

Comparative net movement in funds, included in the above are as follows:

	Incoming resources £	Resources expended £	Movement in funds £
Unrestricted funds			
Waddington Street Centre	163,442	(145,965)	17,477
Old School House	45,007	(32,586)	12,421
Greatham	42,440	(28,437)	14,003
Floating Support	6,820	(5,628)	1,192
Sherburn Hill Flats	60,724	(60,677)	47
Lanchester Road Hospital Discharge Service	3,693	(3,632)	61
	<u>322,126</u>	<u>(276,925)</u>	<u>45,201</u>
Restricted funds			
Waddington Street Centre	-	(25,683)	(25,683)
Cree Projects	8,000	(6,834)	1,166
YP Evening Project	10,299	(8,973)	1,326
Waddy Feel Good Service	22,000	(23,500)	(1,500)
DCC COVID 19 infection control grant	6,353	(9,343)	(2,990)
NHS CCG Digital Worker Grant	-	(14,680)	(14,680)
YP Evenings 21 - 25	5,347	(3,997)	1,350
NHS Community Connector Grant	24,138	-	24,138
Durham AAP Mental Health Digital Inclusion	10,000	-	10,000
	<u>86,137</u>	<u>(93,010)</u>	<u>(6,873)</u>
TOTAL FUNDS	<u>408,263</u>	<u>(369,935)</u>	<u>38,328</u>

WADDINGTON STREET CENTRE LTD

**NOTES TO THE FINANCIAL STATEMENTS - continued
FOR THE YEAR ENDED 31 MARCH 2023**

12. MOVEMENT IN FUNDS - continued

A current year 12 months and prior year 12 months combined position is as follows:

	At 1.4.21 £	Net movement in funds £	Transfers between funds £	At 31.3.23 £
Unrestricted funds				
Waddington Street Centre	169,686	(18,285)	70,293	221,694
Old School House	67,789	9,305	(77,094)	-
Greatham	72,825	14,003	(82,631)	4,197
Floating Support	1,831	1,192	(2,764)	259
Sherburn Hill Flats	4,296	(8,492)	4,196	-
Lanchester Road Hospital Discharge Service	-	61	-	61
Durham Samaritans Society (Out of Hours)	16,655	-	-	16,655
Minibus Replacement Fund	20,000	-	-	20,000
Building Maintenance Fund	-	-	20,000	20,000
Development and Personnel Costs	-	-	58,000	58,000
IT Infrastructure	-	-	10,000	10,000
	<u>353,082</u>	<u>(2,216)</u>	<u>-</u>	<u>350,866</u>
Restricted funds				
Waddington Street Centre	235,796	(34,230)	-	201,566
Cree Projects	3,452	2,053	-	5,505
YP Evening Project	875	(1,325)	450	-
Waddy Feel Good Service	7,798	(1,334)	-	6,464
DCC COVID 19 infection control grant	2,990	(2,990)	-	-
NHS CCG Digital Worker Grant	14,680	(14,680)	-	-
YP Evenings 21 - 25	-	450	(450)	-
Cycling UK	-	1,822	-	1,822
	<u>265,591</u>	<u>(50,234)</u>	<u>-</u>	<u>215,357</u>
TOTAL FUNDS	<u><u>618,673</u></u>	<u><u>(52,450)</u></u>	<u><u>-</u></u>	<u><u>566,223</u></u>

WADDINGTON STREET CENTRE LTD

**NOTES TO THE FINANCIAL STATEMENTS - continued
FOR THE YEAR ENDED 31 MARCH 2023**

12. MOVEMENT IN FUNDS - continued

A current year 12 months and prior year 12 months combined net movement in funds, included in the above are as follows:

	Incoming resources £	Resources expended £	Movement in funds £
Unrestricted funds			
Waddington Street Centre	342,838	(361,123)	(18,285)
Old School House	47,467	(38,162)	9,305
Greatham	42,440	(28,437)	14,003
Floating Support	6,820	(5,628)	1,192
Sherburn Hill Flats	100,084	(108,576)	(8,492)
Lanchester Road Hospital Discharge Service	3,693	(3,632)	61
	<u>543,342</u>	<u>(545,558)</u>	<u>(2,216)</u>
Restricted funds			
Waddington Street Centre	-	(34,230)	(34,230)
Cree Projects	16,000	(13,947)	2,053
YP Evening Project	14,372	(15,697)	(1,325)
Waddy Feel Good Service	44,000	(45,334)	(1,334)
DCC COVID 19 infection control grant	6,353	(9,343)	(2,990)
NHS CCG Digital Worker Grant	-	(14,680)	(14,680)
YP Evenings 21 - 25	5,347	(4,897)	450
NHS Community Connector Grant	24,138	(24,138)	-
Durham AAP Mental Health Digital Inclusion	13,501	(13,501)	-
Cycling UK	1,822	-	1,822
County Durham Sports Together Fund	2,824	(2,824)	-
	<u>128,357</u>	<u>(178,591)</u>	<u>(50,234)</u>
TOTAL FUNDS	<u><u>671,699</u></u>	<u><u>(724,149)</u></u>	<u><u>(52,450)</u></u>

Waddington Street Centre

This unrestricted fund includes funding from Durham Mental Wellbeing Alliance and is used for core service funding.

Old School House

This unrestricted fund was used for housing support. The lease ended on 31st July 2022 with all remaining funds being transferred to the Waddington Street Centre unrestricted fund.

Sherburn Hill Flats

This unrestricted fund was used for housing support. The lease ended on 31st December 2022 with all remaining funds being transferred to the Waddington Street Centre unrestricted fund.

Durham Samaritans Society

This fund relates to a donation left to the centre by the former Durham Samaritans Society upon their closure to be used for out of hours sessions.

Minibus Replacement Funds

This fund are used for a future minibus replacement.

Building Maintenance Fund

As owners of the building, this fund is used for its more significant building maintenance and upkeep requirements.

WADDINGTON STREET CENTRE LTD

**NOTES TO THE FINANCIAL STATEMENTS - continued
FOR THE YEAR ENDED 31 MARCH 2023**

12. MOVEMENT IN FUNDS - continued

Development and Personnel Costs

This fund is used for development opportunities and to cover final personnel costs (should that eventuality arise).

IT Infrastructure Fund

This fund is used for future technology infrastructure developments and IT renewals.

Waddington Street Centre

This restricted fund includes the daily ongoing upkeep of the building.

St Margaret's House, Greatham & Floating Support

Funds in the above categories relate to funds received to improve and maintain housing services and floating support services.

Cree Projects

These funds cover the women's and men's groups at the centre providing support to individuals at risk by providing activities to improve mental and physical health.

YP Evening Project

This fund was used to support a young people's support café and art group for young people aged 16 - 21.

Waddy Feel Good Service

Grant received from Durham County Council to provide support to groups who have anxiety and depression and help those people to alleviate symptoms and prevent further deterioration by helping people to improve their physical health through a combination of diet and exercise.

YP Evening 21 - 25

This fund was used to support individuals to improve their mental and physical health through a variety of mindfulness activities and low level exercise.

Durham AAP Mental Health Digital Inclusive

This fund was used to support individuals with IT support needs and to improve digital take up and understanding amongst members.

NHS Community Connector Grant

This fund was used to employ a support worker with specific member engagement objectives.

County Durham Sport Together Fund / Cycling UK

These funds have been used to start and develop a cycling session to complement existing physical activity sessions offered by the centre.

13. RELATED PARTY DISCLOSURES

There were no related party transactions for the year ended 31 March 2023.